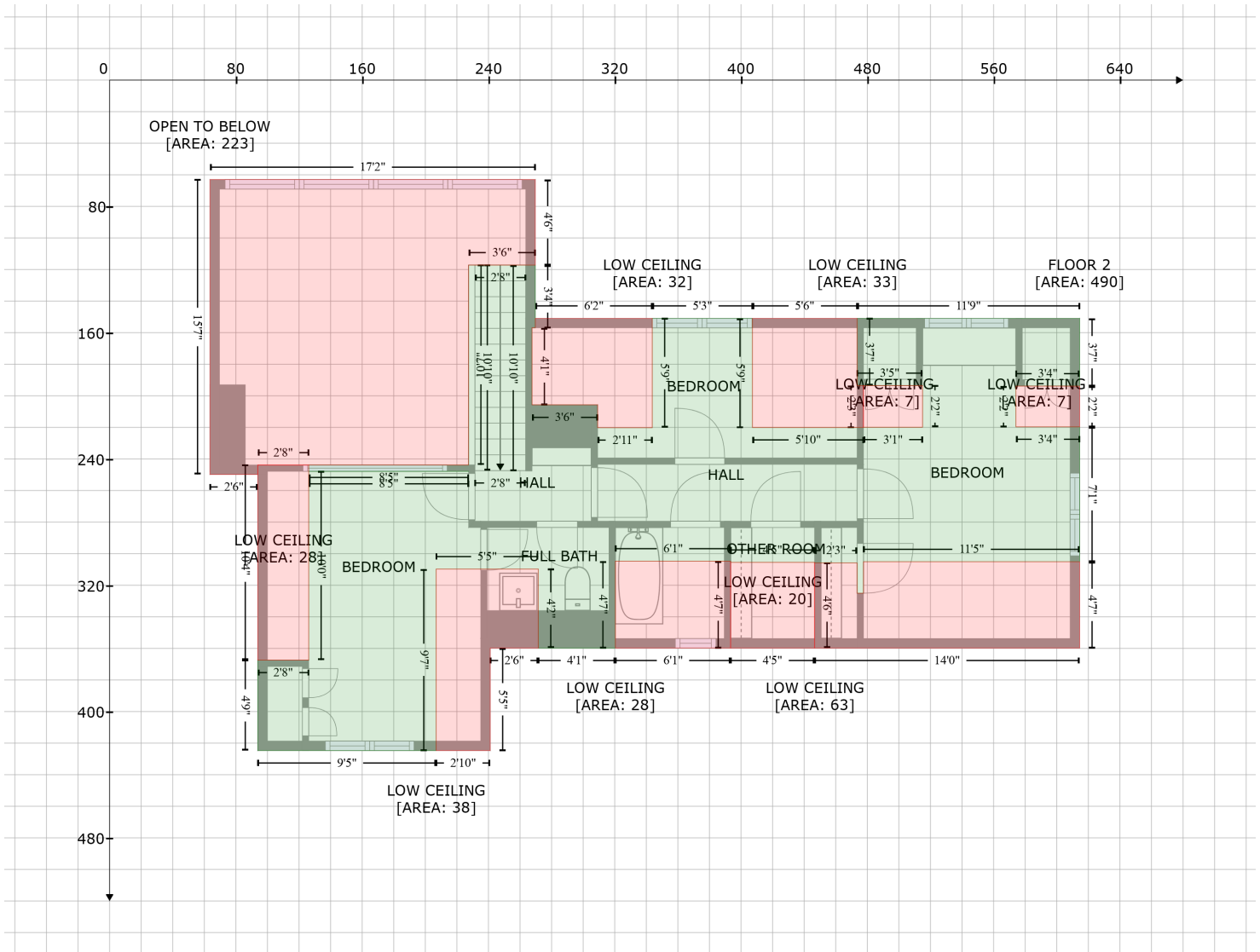


22 Deerhurst Oakridge, Huntsville, Muskoka Lakes, Ontario, Canada, P1H 1A9, Main Cottage

Gross Living Area: 1721 sq. ft



Space	Area (sq. ft)	Calculation
FLOOR 2 (Living area)	490	Coordinate Polygon Area Algorithm using inches $-((269.7 + 269.7) * (117.2 - 156.9) + (269.7 + 267.6) * (156.9 - 156.9) + (267.6 + 267.6) * (156.9 - 205.8) + (267.6 + 309.2) * (205.8 - 205.8) + (309.2 + 309.2) * (205.8 - 220.2) + (309.2 + 343.8) * (220.2 - 220.2) + (343.8 + 343.8) * (220.2 - 150.9) + (343.8 + 407.2) * (150.9 - 150.9) + (407.2 + 407.2) * (150.9 - 220.1) + (407.2 + 477.6) * (220.1 - 220.1) + (477.6 + 477.6) * (220.1 - 219.9) + (477.6 + 515) * (219.9 - 219.9) + (515 + 515) * (219.9 - 193.5) + (515 + 473.6) * (193.5 - 193.5) + (473.6 + 473.6) * (193.5 - 150.9) + (473.6 + 614.5) * (150.9 - 150.9) + (614.5 + 614.5) * (150.9 - 193.8) + (614.5 + 574.2) * (193.8 - 193.8) + (574.2 + 574.2) * (193.8 - 219.6) + (574.2 + 614.5) * (219.6 - 219.6) + (614.5 + 614.5) * (219.6 - 305.1) + (614.5 + 477.6) * (305.1 - 305.1) + (477.6 + 477.6) * (305.1 - 325) + (477.6 + 473.6) * (325 - 325) + (473.6 + 473.6) * (325 - 305.9) + (473.6 + 446.6) * (305.9 - 305.9) + (446.6 + 446.6) * (305.9 - 305.5) + (446.6 + 393.4) * (305.5 - 305.5) + (393.4 + 393.4) * (305.5 - 304.7) + (393.4 + 320.4) * (304.7 - 304.7) + (320.4 + 320.4) * (304.7 - 359.8) + (320.4 + 271.6) * (359.8 - 359.8) + (271.6 + 271.6) * (359.8 - 309.7) + (271.6 + 206.9) * (309.7 - 309.7) + (206.9 + 206.9) * (309.7 - 424.7) + (206.9 + 93.8) * (424.7 - 424.7) + (93.8 + 93.8) * (424.7 - 367.4) + (93.8 + 126.1) * (367.4 - 367.4) + (126.1 + 126.1) * (367.4 - 247.9) + (126.1 + 227.5) * (247.9 - 247.9) + (227.5 + 227.5) * (247.9 - 247.8) + (227.5 + 126.1) * (247.8 -$

22 Deerhurst Oakridge, Huntsville, Muskoka Lakes, Ontario, Canada, P1H 1A9, Main Cottage

Gross Living Area: 1721 sq. ft

Space	Area (sq. ft)	Calculation <small>Coordinate Polygon Area Algorithm using inches</small>
LOW CEILING (Non-living area)	38	$247.8 + (126.1 + 126.1) * (247.8 - 243.8) + (126.1 + 227.3) * (243.8 - 243.8) + (227.3 + 227.4) * (243.8 - 117.2) + (227.4 + 269.7) * (117.2 - 117.2) * 0.5 * 0.00694$
LOW CEILING (Non-living area)	28	$-((271.6 + 271.6) * (309.7 - 359.8) + (271.6 + 241.1) * (359.8 - 359.8) + (241.1 + 241.1) * (359.8 - 424.7) + (241.1 + 206.9) * (424.7 - 424.7) + (206.9 + 206.9) * (424.7 - 309.7) + (206.9 + 271.6) * (309.7 - 309.7)) * 0.5 * 0.00694$
LOW CEILING (Non-living area)	28	$-((126.1 + 126.1) * (243.8 - 367.4) + (126.1 + 93.8) * (367.4 - 367.4) + (93.8 + 93.8) * (367.4 - 243.8) + (93.8 + 126.1) * (243.8 - 243.8)) * 0.5 * 0.00694$
LOW CEILING (Non-living area)	28	$-((393.4 + 393.4) * (304.7 - 359.8) + (393.4 + 320.4) * (359.8 - 359.8) + (320.4 + 320.4) * (359.8 - 304.7) + (320.4 + 393.4) * (304.7 - 304.7)) * 0.5 * 0.00694$
LOW CEILING (Non-living area)	63	$-((614.5 + 614.5) * (305.1 - 359.8) + (614.5 + 446.6) * (359.8 - 359.8) + (446.6 + 446.6) * (359.8 - 305.9) + (446.6 + 473.6) * (305.9 - 305.9) + (473.6 + 473.6) * (305.9 - 325) + (473.6 + 477.6) * (325 - 325) + (477.6 + 477.6) * (325 - 305.1) + (477.6 + 614.5) * (305.1 - 305.1)) * 0.5 * 0.00694$
LOW CEILING (Non-living area)	20	$-((446.6 + 446.6) * (305.5 - 359.8) + (446.6 + 393.4) * (359.8 - 359.8) + (393.4 + 393.4) * (359.8 - 305.5) + (393.4 + 446.6) * (305.5 - 305.5)) * 0.5 * 0.00694$
LOW CEILING (Non-living area)	32	$-((343.8 + 343.8) * (150.9 - 220.2) + (343.8 + 309.2) * (220.2 - 220.2) + (309.2 + 309.2) * (220.2 - 205.8) + (309.2 + 267.6) * (205.8 - 205.8) + (267.6 + 267.6) * (205.8 - 156.9) + (267.6 + 269.7) * (156.9 - 156.9) + (269.7 + 269.7) * (156.9 - 150.9) + (269.7 + 343.8) * (150.9 - 150.9)) * 0.5 * 0.00694$
LOW CEILING (Non-living area)	33	$-((473.6 + 473.6) * (150.9 - 193.5) + (473.6 + 477.6) * (193.5 - 193.5) + (477.6 + 477.6) * (193.5 - 220.1) + (477.6 + 407.2) * (220.1 - 220.1) + (407.2 + 407.2) * (220.1 - 150.9) + (407.2 + 473.6) * (150.9 - 150.9)) * 0.5 * 0.00694$
LOW CEILING (Non-living area)	7	$-((515 + 515) * (193.5 - 219.9) + (515 + 477.6) * (219.9 - 219.9) + (477.6 + 477.6) * (219.9 - 193.5) + (477.6 + 515) * (193.5 - 193.5)) * 0.5 * 0.00694$
LOW CEILING (Non-living area)	7	$-((614.5 + 614.5) * (193.8 - 219.6) + (614.5 + 574.2) * (219.6 - 219.6) + (574.2 + 574.2) * (219.6 - 193.8) + (574.2 + 614.5) * (193.8 - 193.8)) * 0.5 * 0.00694$
OPEN TO BELOW (Non-living area)	223	$-((269.7 + 269.7) * (63 - 117.2) + (269.7 + 227.4) * (117.2 - 117.2) + (227.4 + 227.3) * (117.2 - 243.8) + (227.3 + 93.8) * (243.8 - 243.8) + (93.8 + 93.8) * (243.8 - 249.8) + (93.8 + 63.6) * (249.8 - 249.8) + (63.6 + 63.6) * (249.8 - 63) + (63.6 + 269.7) * (63 - 63)) * 0.5 * 0.00694$